

Note on some copper Buddhist coins.—By H. RIVETT-CARNAC, Esq., C. S.,
C. I. E., F. S. A.

(With two Plates.)

I send for the inspection of the Society, some coins, mostly Buddhist from my Cabinet, some of which may perhaps prove of interest. They will not all, I think, be found described or figured in the works most readily accessible to Members, and it is possible some of them may be new types. I am indebted to Mr. A. Carlleyle of the Archæological Survey for the readings on the coins.

Plate XVI, Nos. 1, 2. Legend *Vaisakha Devasa*. Two coins, if they may so be called, of the same type differing in size. They are evidently casts, *i. e.*, have been made in a mould prior to the time the art of stamping was discovered. On one side is the Bull taking here the place of the Elephant common to the earlier coins. The name tolerably clear above the Bull. On the obverse what looks like the Trisul of the Sanchi Topes, and the snake. I should be glad to know if this coin is known to the Society?

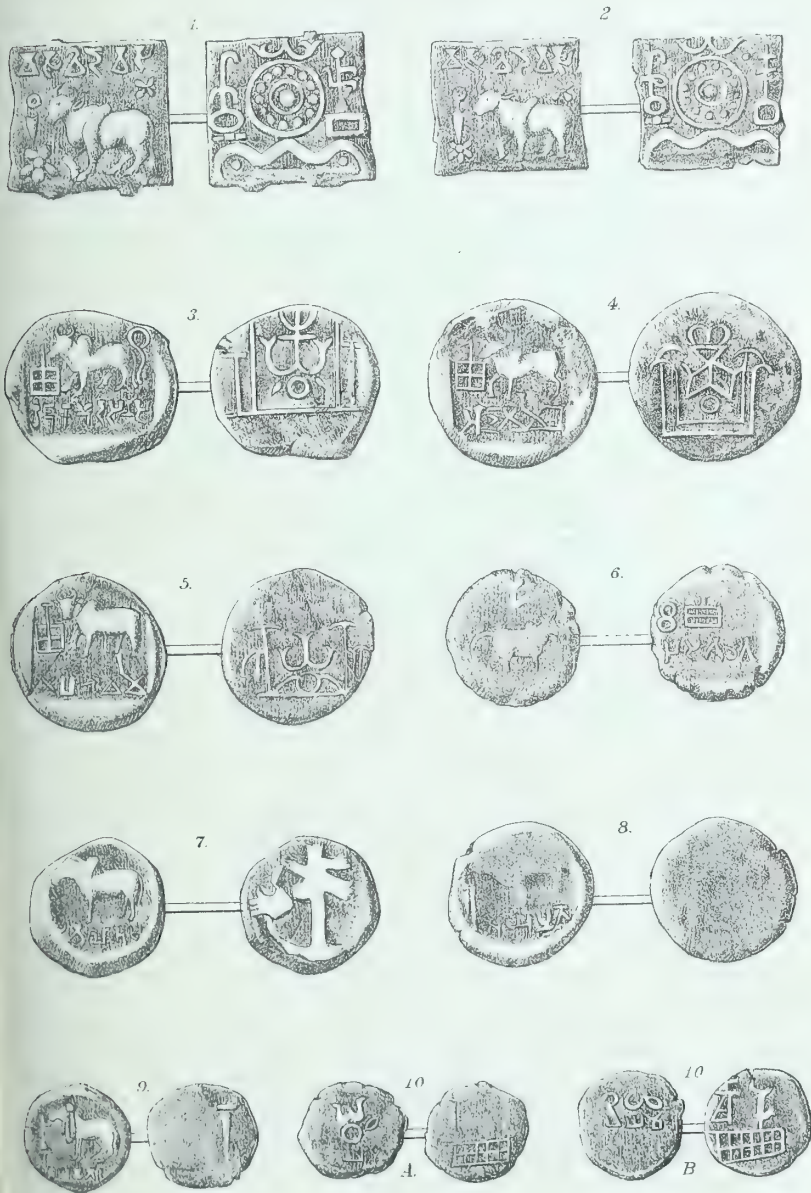
No. 3. Legend *Rāja Kamuda Senasa*. This coin resembles the preceding ones in several respects. The Bull again occupies the most prominent place. The legend is beneath the Bull; near the head of the Bull is the sacred tree. Behind the Bull is the snake. At first sight this has the appearance of an elaborate tail of the Bull. But a careful inspection will show that the tail is separate and quite distinct. On the obverse is the well known ornament which I think Fergusson calls the "Trisul," though it is different enough from Shiva's trident. It will be noticed that the marks on these coins have apparently been stamped in the same manner as those of the Mitras, found near Barelli and recently submitted by me to the Society. The Bull and Legend have been stamped in, as if with a square seal, and cover but a portion of the circular piece of metal. Perhaps these coins represent some of the earliest attempts at coining?

No. 4. Legend *Aja Varmma* or *Asha Varmma*; a coin of the same type as above; the legend differing.

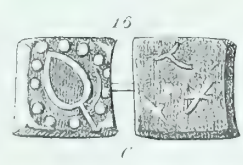
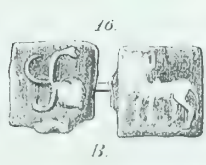
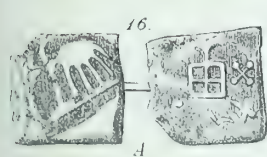
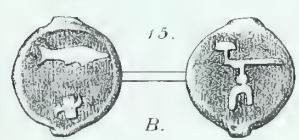
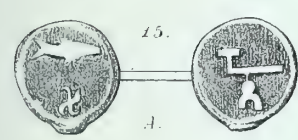
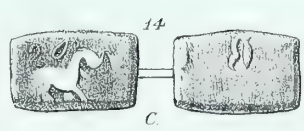
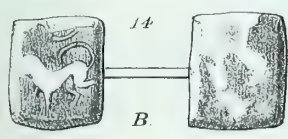
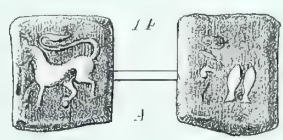
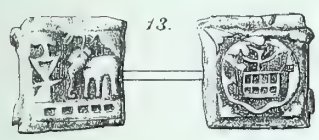
No. 5. Legend *Maphaba Varma*. The same remarks apply here also. The coin has been cut in two, and was just going to the melting-pot when I was fortunate enough to rescue the two pieces from a quantity of rubbish. It is to be feared that a good many coins are thus lost to us. All the above were obtained by me at Faizabád.

No. 6. *Maha Satama*. A coin apparently of the same type as above but in bad preservation.

No. 7. *Saiya Mitrasa*.



COPPER BUDDHIST COINS.



COPPER BUDDHIST COINS.

No. 8. *Ayu Mitrasa.*

No. 9. *Saya Mitrasa.*

All of the well known "Cock and Bull" type, but new names I believe.

No. 10. *Yaya Mitra* (two specimens).

Plate XVII No. 11. *Vyaya Mitra.*

These coins seem much older than the preceding ones.

No. 12. (Lion) *Laranga* or *Larata* or *Lájusa.* (Tree) *Súgáta-Yana-pya.*

This coin is quite a different type from the preceding. On one side is a Lion much resembling the carvings found among the ruins of old Buddhist Temples.

No. 13. A pretty little Buddhist coin of a type I have not yet seen figured. The sacred tree is encircled by the snake forming a sort of rosetta in the centre of the coin.

No. 14. These three little oddly-shaped specimens have all well stamped on one side what looks like the conventional Heraldic Lion. On the other side may be traced marks somewhat resembling the sign *Pisces* of the Zodiac.

No. 15. Two specimens of a coin which is perhaps new. On one side what looks like a Fish as in the preceding coins, on the other a Thor's Hammer (?) or perhaps the sign of Saturn combined with some other sign in such a manner as to form a monogram?

No. 16. Three little coins of sorts.

I should be glad for information regarding the dynasties, dates, &c., of these coins.